

**EXHIBIT A**  
**SCOPE OF WORK**

**Project Description:**

The scope of work for the CNUSD Transportation Office Expansion Project includes the following but is not limited to: Interior modernization of a relocatable building that needs to be relocated from Auburndale Intermediate School (1255 River Road, Corona) to 300 S. Buena Vista Avenue, Corona and related site work per DSA 04-122251 drawings and specifications and related bid documents. As well as relocating relocatable building B7 from Auburndale Intermediate School (300 S. Buena Vista) to the maintenance yard at 300 S. Buena Vista Avenue, Corona, per the bid documents.

Exhibits include the DSA approved plans and specifications, a geotechnical report, a utility survey, a hazmat survey for the portables, project renderings and color board, scope of work document for the maintenance relocatable building, and the DSA Form 103 – Listing of Structural Tests and Special Inspections.

---

The Project Documents contain the Contract Documents and the Project Bid Drawings.

Construction Cost: Estimated at \$1,200,000.00 Dollars

All project information and specifications are included within these documents.

Project Team –

Marcos Carrillo, Project Architect – PBK Architects  
Jackie Roberts, Project Manager – District Representative

Liquidated damages: \$500.00 a day

Project Manual Contents:

1. Contract Documents (front end documents)
2. General Conditions – available at District Purchasing website”  
[https://www.cnusd.k12.ca.us/departments/business\\_services/purchasing/bids\\_rfps](https://www.cnusd.k12.ca.us/departments/business_services/purchasing/bids_rfps)
3. Plans and specifications including sheet AX2.00 and DSA Addendum 01
4. DSA Form 103
5. Geotechnical Report
6. Land and Utility Survey
7. Hazmat survey for portable
8. Project renderings and color board
9. Maintenance Portable Scope of Work Document

Construction Duration:

Construction	5/6/24 - 10/4/24	152 calendar days
--------------	------------------	-------------------

## **Scope of Work**

### **Relocatable Building B7 Move from Auburndale Intermediate School to CNUSD Maintenance Yard**

Move relocatable B7 from Auburndale Intermediate School to the Maintenance Yard at 300 S. Buena Vista, Corona, CA

This scope of work is to be done concurrently with the scope of work for the transportation office expansion project. This scope of work is not under DSA review, for any specification needs refer to the Transportation Office Expansion Project Specifications.

- 1.) Removal of relocatable from Auburndale
  - a. Existing 36' x 40' relocatable classroom building B7 to be relocated to the CNUSD maintenance yard at 300 S. Buena Vista Ave, Corona, CA 92882. Existing electrical wiring to be demolished; disconnect and remove existing wiring, conduits and conductors back to nearest junction box to remain, cap and provide cover plate.
  - b. Existing concrete ramp and handrail to be demolished.
  - c. For the ramp that needs to remain in front of portable B6, 4' – 5' of railing needs to be installed at the end of the ramp where B7 was removed. This railing can be constructed out of wood but must be splinter free.
  - d. Removal all debris from demolition area, compact grade
  
- 2.) Placement of relocatable classroom B7 at the Maintenance yard
  - a. Remove curb and prepare dirt area for asphalt placement.
  - b. Asphalt will be 3" of asphalt over 4" of crushed aggregate base (CAB)
  - c. New asphalt should match the grade of the surrounding existing asphalt.
  - d. Place portable on treated wood on top of the asphalt.
  - e. Setup the building and ensure it is watertight.
  - f. New finishes, electrical work, plumbing work, and ramps will be completed by others.

Figure 1: Auburndale Intermediate School





Figure 2: Maintenance yard 300 S. Buena Vista – Location where the relocatable building needs to be placed.

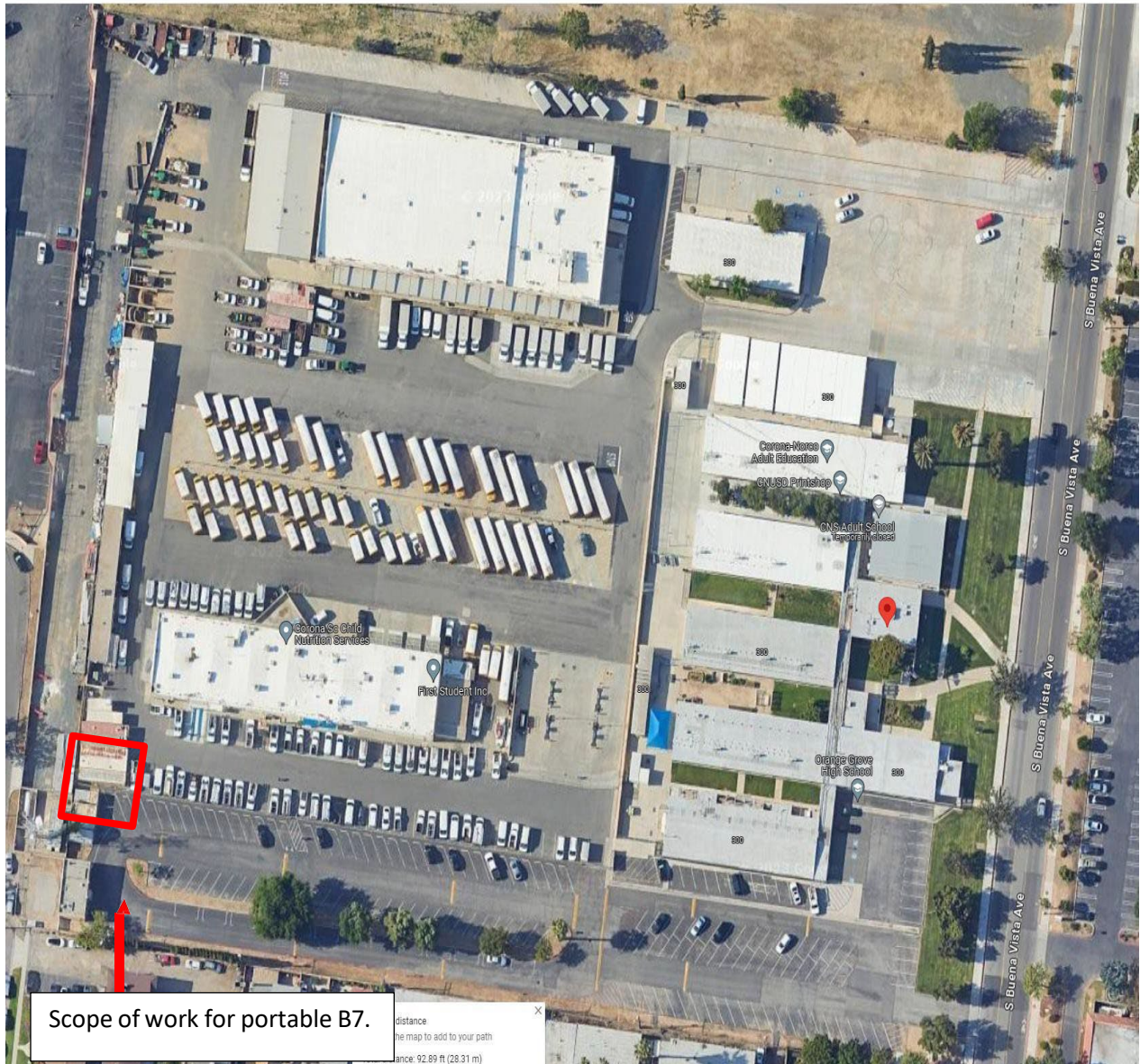


Figure 3: Maintenance yard, demolition scope of work.



Bins and fencing will be removed by others.

Remove existing curb, and prepare ground for asphalt.

Place asphalt and follow grade of surrounding asphalt.

3" of asphalt over 4" of Crushed Aggregate Base (CAB).



Figure 4: Picture of the space behind bins



Tree needs to be removed.

Figure 5: Photo showing curb that needs to be removed and the dirt area where asphalt needs to be installed and where the relocatable building will be placed.



Figure 6: Showing location for relocatable building B7 placement.





Figure 7: Details of placement of relocatable building B7.



Portable B7: Contractor to remove built in desks and utility poles.





Portable B7: Contractor to protect casework and sink in place.

